



## PIATTAFORMA PER LAVORO AEREO AUTOCARRATA

TRUCK-MOUNTED AERIAL LIFT WORK PLATFORM

HUBARBEITSBÜHNE AUF LKW

NACELLE ÉLEVATRICE ARTICULÉE



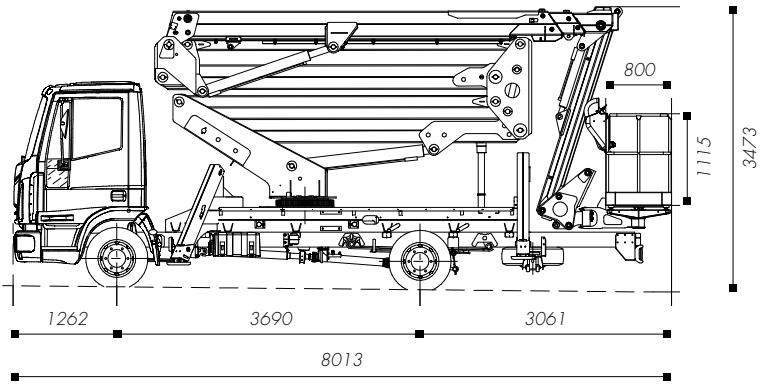
**PNT 280J**

isoli@isoli.com | www.isoli.com

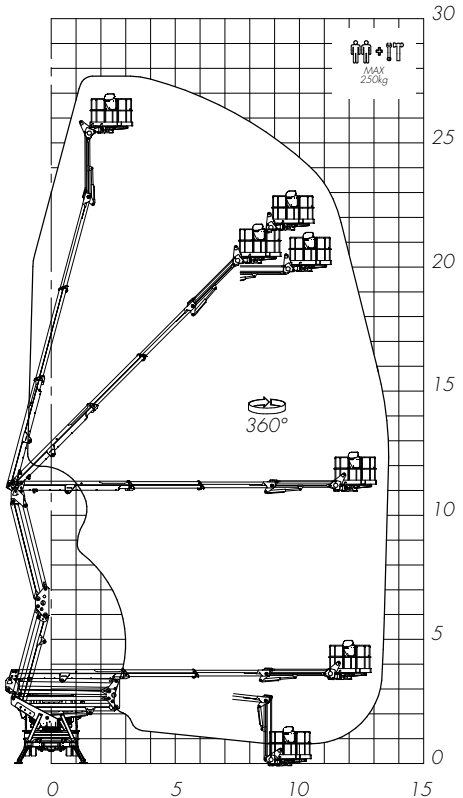




## DIMENSIONI / OVERALL DIMENSION / GESAMTABMESSUNGEN / DIMENSIONS [mm]



## DIAGRAMMA DI LAVORO / WORKING DIAGRAM / ARBEITSDIAGRAMM / SCHÉMA DE TRAVAIL [m]



## CARATTERISTICHE TECNICHE / TECHNICAL FEATURES / TECHNISCHE EIGENSCHAFTEN / DETAILS TECHNIQUES

	<b>Sbraccio max. di lavoro</b> Max. working boom extension Max. Reichweite Portée à hauteur maximale	13,70 m
	<b>Portata</b> Capacity Traglast Charge utile	200 Kg
	<b>N. operatori</b> N. operators Anzahl Personen N. opérateurs	2
	<b>Altezza piano calpestio</b> Walk-on surface height Korbbodenhöhe Hauteur plancher	25,80 m
	<b>Rotazione sovrastruttura</b> Upperstructure rotation Drehung Oberwagen Rotation tourelle	370°
	<b>Cesta</b> Basket Arbeitskorb Panier	Alluminio 1800x800x1100 mm Aluminium 1800x800x1100 mm Aluminium 1800x800x1100 mm Aluminium 1800x800x1100 mm
	<b>Rotazione cestello</b> Basket rotation Korbbrotation Rotation panier	90° dx/sx 90° R.-H./L.-H. 90° Rechts/Links 90° droite/gauche
	<b>Comandi</b> Controls Steuerungen Commandes	Elettroidraulici Electro-hydraulic Elektrohydraulisch Électrohydrauliques
	<b>Stabilizzatori</b> Outriggers Abstützungen Stabilisation	Verticale HH / Obliqua A-A Vertical stabilisation HH / A-A Oblique Vertikale Stabilisierung HH / Schräg A-A Stabilisation verticale HH/oblique A-A